

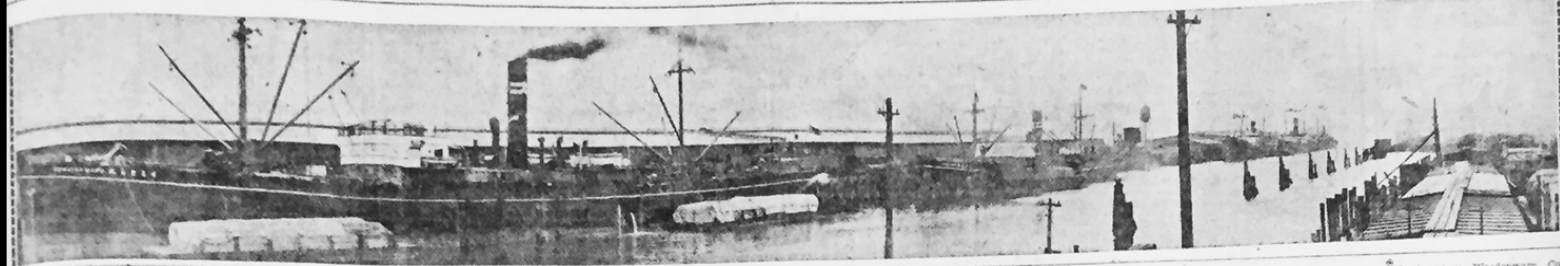


TACOMA

-the industrial center



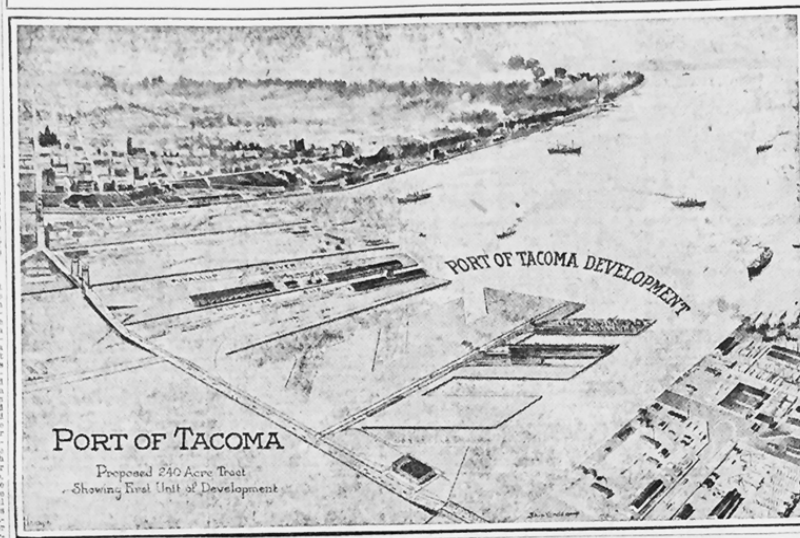
TRANSPACIFIC LINERS LOADING FREIGHT AT TACOMA'S OCEAN DOCKS FOR THE ORIENT



...the faith which has led th

city of 50 tons, will be available for work on either of the piers. A shear

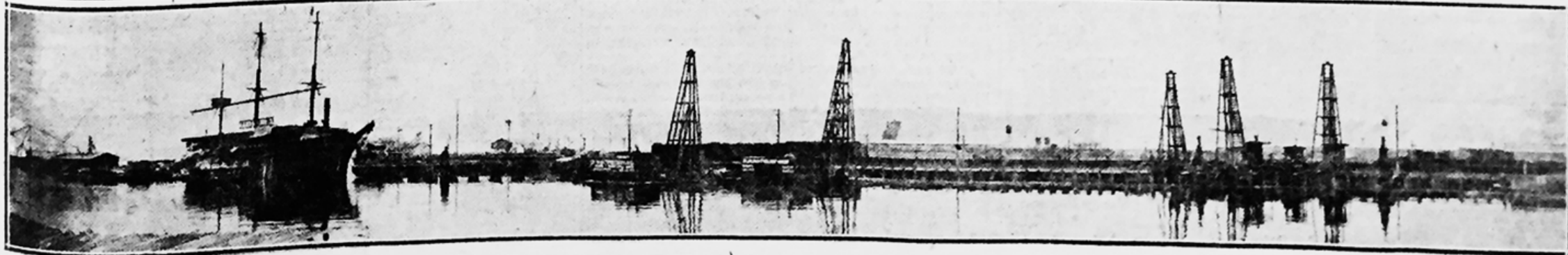
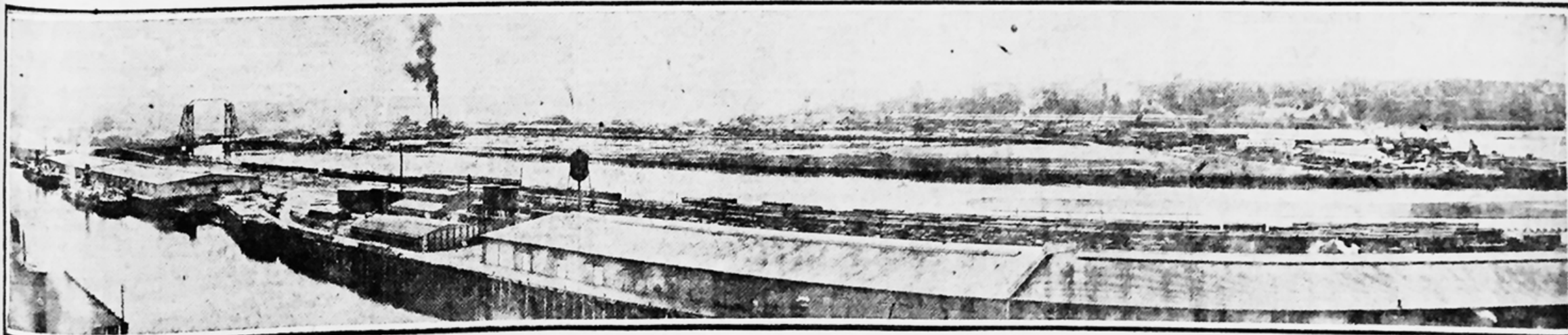
HOW TACOMA'S COMPLETED PORT PROJECT WILL LOOK



Twenty mills in and near the C produced in 1919 approximately a billion feet of lumber and 100,000,000 shingles, making an increase in export over 1918 of 56,549,172 feet of lumber.

it that they are to be still further enlarged. The Griffin Wheel Works there has recently doubled its capacity. The Milwaukee railroad also maintains shops here for repair work.

BIRDSEYE VIEW OF TACOMA'S GREAT INDUSTRIAL AND FACTORY DISTRICT



PILE DRIVERS BUSY ON PORT OF TACOMA'S BIG INDUSTRIAL WAREHOUSE AND DOCK PROJECT

**KIWANIANS PROVE
HARDY MARINERS
ON TUESDAY TRIP**

**Get Stuck on Sand Bar on
Journey to Buffelen
Mill**